



2010-2011 HBA Fall/Winter Seminars

COST

For HBA Members: No admission charge; written materials are \$15

For Non-HBA Members: \$25 admission charge at the door per program; fee includes written materials.

Total CLE Hours for September 2010 - February 2011 Seminars:

36.0 hours MCLE credit

3.5 hours ethics credit

Thursday Morning

West Loop Area Seminars

8:00 a.m. to 9:30 a.m.

1811 Briar Oaks Lane

The Junior League of Houston

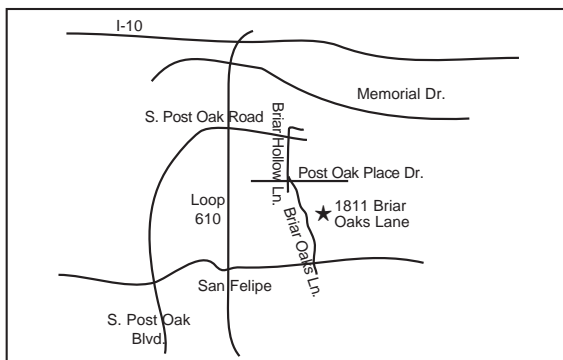
Friday Afternoon

Downtown Area Seminars

1:00 p.m. to 2:30 p.m.

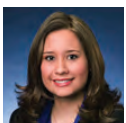
1019 Congress Plaza

Harris County Jury Assembly Room



Commerce				
			Criminal Justice Center	
Franklin				
		1019 Congress ★ Plaza	Family Law Center	Civil Courtthouse
Congress				
		Harris County Administration		Juvenile Justice Center
Preston				
Prairie	Main	Fannin	San Jacinto	Caroline

2010-2011 HBA Continuing Legal Education Committee



Diana Perez Gomez
2010-2011 CLE
Co-Chair



Hugh M. Ray III
2010-2011 CLE
Co-Chair



Marilyn Kulifay
Seminar Co-Chair



Hon. Meca Walker
Seminar Co-Chair

**HOUSTON BAR ASSOCIATION
2010-2011 Continuing
Legal Education
Committee**

Institutes Co-Chairs

Michael M. Essmyer
Micah S. Heilbrun

Bench Book Chair

Honorable Lamar McCorkle

CLE Committee Members

Lee Arellano*
Gordon Arnold
Pamela S. Barnett*
Julie Barry
Carliss Chatman*
J. Brantley Durrett III
Jason Fowell
Beverly B. Lord*
L. Renée Lowe
Scott Michelman*
Matt Moore
George Bashier Murr

James A. Passamano*

Vianei L. Robinson*
Maidie Ryan*
Stanley P. Santire*
Tim Shelby
Lance Stodghill*

Director of Education

Lucy Fraga Fisher

September 2010

Friday, September 10, 2010

Property Tax Appeals: A Primer for Lawyers

A review and examination of administrative rules and procedures for protesting and appealing appraisal appeals. This seminar will include a discussion of recent legislative changes and court cases.

1.5 hours MCLE credit, including .25 hours ethics credit.



Bernardo J. Garcia
Harris County
Appraisal District

Thursday, September 16, 2010 Labor and Employment Law

Major changes in labor & employment law are impacting the workplace, and more are on the way. We will give an update on these changes, provide insight on some that are on the horizon, and discuss ethics issues confronting lawyers who practice employment law. We also will discuss ethical challenges that confront both plaintiff and defendant counsel in workplace disputes, such as what employees the plaintiff can contact and clarifying the scope of representation.

1.5 hours MCLE credit, including .25 hours ethics credit.



Steven E. Petrou
Law Office of
Steven Petrou



Stanley P.
Santire
Santire Law Firm

Thursday, September 23, 2010 A Hearing Officer's View on How to Win Your TWC Appeal

This seminar will cover what a hearing officer considers important when ruling on a Texas Workforce Appeal for unemployment benefits and what pitfalls you need to avoid.

1.5 hours MCLE credit, no ethics credit.



Robert J. Inger
Law Firm of
Robert J. Inger

Friday, September 24, 2010 Things Every Lawyer Should Know About Taxes

This seminar will be a primer on tax protests, tax scams and how to avoid getting involved in them along with entity choice, as well as the tax appeals system.

1.5 hours MCLE credit, including .25 hours ethics credit.



Sherry German
Attorney at Law

October 2010

Friday, October 1, 2010

Post Judgments

Tools and techniques to collect and enforce judgments including investigations of assets, abstracts, writ of execution, garnishment and post-judgment discovery.

1.5 hours MCLE credit, no ethics credit.



Peter E. Pratt
Attorney at Law



Allen D. Russell
Taylor, Taylor &
Russell

Thursday, October 7, 2010

What You Need to Know in Federal Court

A practical guide to practice in Federal Court and some of the differences compared to State Court practice.

1.5 hours MCLE credit, no ethics credit.



Hon. Gray H.
Miller
United States
District Court

Friday, October 8, 2010

An Overview of Seamen's Personal Injury Claims

This will be an overview of the three primary personal injury claims available to seamen: maintenance and cure, negligence under the Jones Act, and unseaworthiness under general maritime law. The presentation will include a general discussion of each claim, defenses, and recent case law from the Fifth Circuit and U.S. Supreme Court by a maritime defense attorney.

1.5 hours MCLE credit, no ethics credit.



Matthew H.
Ammerman
Law Office of
Matthew H.
Ammerman, PC

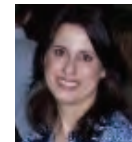
Thursday, October 14, 2010 Social Media: How to Use, Risks & Ethics

Developing a plan to handle a crisis for a client can be the difference between a social blunder and disaster. Having a social media team will help you investigate, solve and understand how to find what was actually said about your client on the Internet. This presentation will provide online examples of how to monitor social media ethically and effectively.

1.5 hours MCLE credit, including .25 hours ethics credit.



Rick Alexander
UnionConnect



Mary Reveles
Attorney at Law

October 2010 continued

Friday, October 22, 2010

Dealing with Difficult Clients

At this seminar you will learn techniques to prepare clients for deposition and trial when case subject matter and/or client personality challenge your advocacy and trial preparation abilities. Learn techniques to maximize your client's believability and trustworthiness on direct and "bomb proofing" for cross examination.

1.5 hours MCLE credit, including .25 hours ethics credit.



Robert E. Ray
Veritas Research,
L.P.

November 2010

Friday, November 5, 2010

US v. Skilling: Is this Reversal the Death of Honest Services?

This seminar will examine the Supreme Court's recent decision in *U.S. vs. Jeffrey Skilling* and the ramifications of that decision. The Court reversed the case and narrowed the scope under which federal prosecutors can now charge an individual with violating the honest services statute in U.S.C. Section 1346. The decision is far from being the end of the story for *Skilling* however, as the lower courts will now have to re-examine the case in light of the ruling and still must decide the prosecutorial misconduct issues asserted by the defense team against the Enron Task Force.

1.5 hours MCLE credit, no ethics credit.



James M. Ardoin III
Cogdell & Ardoin,
LLC

Thursday, November 11, 2010
Regulation of Hospitals

Healthcare is one of the most regulated industries in the United States. Hospitals must comply with a vast array of state and federal laws and regulations. In this program two hospital lawyers will provide an overview of the federal regulatory environment, the agencies involved, and related issues faced by hospital legal and compliance programs.

1.5 hours MCLE credit, no ethics credit.



James T. Downes
Harris County
Attorney's
Office



Laurel R. Hyle
The University
of Texas M.D.
Anderson
Cancer Center

November 2010 continued

Friday, November 12, 2010

Litigation & Divorce Tax Traps & Tips

Learn how to avoid causing clients' tax problems, avoid liability for your clients' tax, how to draft settlements and judgments to avoid tax problems and knowing when clients need tax help.

1.5 hours MCLE credit, including .25 hours ethics credit.



Finis E. Cowan III
Cowan & Co.



Alan D. Westheimer
Alan D. Westheimer,
CPA/CFF, CFE

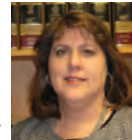
Thursday, November 18, 2010

A Shingle and a Laptop: Starting Your Own Firm From Scratch

Whether due to an entrepreneurial streak or a contracting job market, many attorneys are striking out on their own.

This practical guide will discuss the steps needed for both novice and seasoned attorneys to start and grow a law practice on a shoestring budget.

1.5 hours MCLE credit, including .25 hours ethics credit.



Rhonda Beassie
University of
Houston Law Center



Lance Stodghill
W. Lance Stodghill,
P.C.

December 2010

Thursday, December 2, 2010

Family Law Extravaganza

Learn from the family law experts about temporary orders, default divorces and divorce from a child's point of view (what you need to know and do).

1.5 hours MCLE credit, including .25 hours ethics credit.



Claudia Canales
Law Office of
Claudia Canales



Dessiray W. Cusic
Law Office of
Dessiray W. Cusic



John F. Nichols Jr.
Jenkins & Kamin,
L.L.P.

Friday, December 3, 2010

Practical Tips in Handling Workplace Investigations

It can happen to a client or to your own law firm – a report of harassment, discrimination, threats, embezzlement or drug use! What to do? Workplace investigations involve a multitude of legal and practical issues. Hear the latest tips from an experienced investigator and employment lawyer.

1.5 hours MCLE credit, including .25 hours ethics credit.



Pamela Fagan
Hutchins
Employment
Practices
Solutions



Viane Lopez
Robinson
Buck Keenan
LLP

December 2010 continued

Thursday, December 9, 2010 Practicing Before the 1st and 14th Courts of Appeals: The Clerks' Perspective

This seminar will provide insight into how the Houston Courts of Appeals operate as a case moves from the Notice of Appeal to issuance of Mandate. The clerks for the Houston Appellate Courts will discuss case management, legislative performance measures, e-filing, and best practices to assist the clerk's office as a case moves through the appellate process.

1.5 hours MCLE credit, including .25 hours ethics credit.



Karinne McCullough
1st Court of Appeals



Christopher Prine
14th Court of Appeals

Friday, December 10, 2010 Disability Benefits In a Nutshell

This course will be a survey of the three primary types of disability benefit claims available to claimants, including social security disability, long-term disability insurance and veterans' disability claims. The course will compare and contrast the administrative and legal process for each type of claim as well as the disability standard for each.

1.5 hours MCLE credit, including .25 hours ethics credit.



Marc S. Whitehead
Marc Whitehead & Associates, L.L.P.

Thursday, December 16, 2010 The OPA and Business Interruption Claims

The speaker will address The Oil Pollution Act and its applicability to business interruption claims in the wake of the BP oil spill disaster.

1.5 hours MCLE credit, no ethics credit.



John Black
Reynolds, Frizzell, Black, Doyle, Allen & Oldham L.L.P.

January 2011

Friday, January 7, 2011 Mechanic's and Materialman's Liens: Perspectives from the Contractor, the Owner and the Lender.

A discussion of mechanic's lien laws and case law interpreting the same. Whether you represent a general contractor, subcontractor or supplier, the lien laws affect your client. A discussion will focus on the various mechanics lien statutes and the relation back doctrine and foreclosure process.

1.5 hours MCLE credit, no ethics credit.



Elizabeth Debaillon
Cokinos, Bosien & Young



Hon. J. Richard Hall
Ross, Banks, May, Cron & Cavin, P.C.

January 2011 continued

Thursday, January 13, 2011 Hot Topics in Environmental Law

This seminar will update the audience on trends in environmental law, feature a discussion on environmental ethics and provide an overview of various environmental issues that may impact practitioners in other practice areas.

1.5 hours MCLE credit, including .25 hours ethics credit.



Debra Tsuchiyama Baker
Connelly • Baker • Wotring LLP



Marty E. Thompson
Haynes and Boone, LLP

Friday, January 14, 2011 Can You Keep it Secret? – A Lawyer's Guide to Data Privacy

Every lawyer and client has more and more electronic data stored on desktop and laptop computers, servers, PDAs, mobile telephones, flash drives, CDs, DVDs, and even in photocopiers. The data includes everything from shopping lists to trade secrets to credit card information to social security numbers. Many lawyers and clients do not know where all their electronic data is or how to protect it. Yet major liability can result from failing to guard private data from wrongdoers. This seminar will review risks, requirements and recommendations.

1.5 hours MCLE credit, including .5 hours ethics credit.



Nicholas Deutsch
Shook, Hardy & Bacon L.L.P.



Derek J. Lisk
Shook, Hardy & Bacon L.L.P.

Friday, January 21, 2011 Immigration Enforcement in the Workplace

This seminar will cover employment authorization requirements (Form I-9 and/or E-Verify) and H-1 B visa requirements, what an employer should expect if it receives an audit notice, what the audit involves and how the employer should respond and protect itself from potential penalties and/or criminal liability.

1.5 hours MCLE credit, including .25 hours ethics credit.



Jerry Redmond, Jr.
Conner & Winters, LLP

February 2011

Friday, February 4, 2011

How to Collect e-Data – Efficiently and Legally

This seminar will take you through the case law and the current thinking in determining what eData collection method is appropriate for your client's lawsuit - be it allowing your client to self collect or physically witnessing an employee's computer being forensically imaged. This CLE will give you some practical decision making factors and tools to collect your documents in a method that is economical for your client but will hold up in court should there be a question.

1.5 hours MCLE credit, including .25 hours ethics credit.



Lauren Beth Hoffer
Morgan, Lewis &
Bockius LLP

Thursday, February 24, 2011 Corporate Governance, Ponzi Schemes and Fraud

This seminar will present a free-wheeling discussion of the increased role of the government in its oversight of corporations and the effect of such oversight on individuals. The speakers will present examples of recent case histories and discuss current initiatives of the Department of Justice and the Securities & Exchange Commission. Discussion will focus on trends in prosecutions and how to deal with the self-reporting dilemma.

1.5 hours MCLE credit, no ethics credit.



Timothy Johnson
Locke Lord Bissell
& Liddell LLP



Charles R. Parker
Locke Lord Bissell
& Liddell LLP

Upcoming CLE Events

All Day Ethics Institute

Saturday, November 6, 2010

Harris County Jury Assembly Room

Wills & Probate Institute

Fridays, February 18 & 25, 2011

Harris County Jury Assembly Room

All Day Ethics Institute

Saturday, February 5, 2011

Harris County Jury Assembly Room

Family Law Institute

Fridays, April 8 & 15, 2011

Harris County Jury Assembly Room

HBA/CLE Online

The following HBA/CLE Seminars are available online at CLEonline.com. HBA members receive a **20% discount** on any HBA program available. Call the HBA office at (713) 759-1133 to get the discount code.

10 Winning Summary Judgment Appeals

1.25 hours MCLE credit/no ethics credit.

2009 Texas Family Law Institute Children Issues

3.25 hours MCLE credit/no ethics credit.

2009 Texas Family Law Institute Property Issues

3.50 hours MCLE credit/no ethics credit.

A Practical Approach to Assisting with Vet- eran's Legal Issues

1.25 hours MCLE credit/no ethics credit.

Champion of the Over-Privileged: Tricks and Traps of Representing Corporate Executives

1.25 hours MCLE credit/no ethics credit.

Changing Practice for Changing Times: Working from Home

1.0 hour MCLE credit/no ethics credit.

Changing Practice for Changing Times: Going Solo

1.5 hours MCLE credit/no ethics credit.

Construction Law's Dirty Dozen: Twelve Things Every Lawyer Should Know

1.25 hours MCLE credit/no ethics credit.

Consumer Mortgage Law and Foreclosure Issues

1.25 hours MCLE credit/no ethics credit.

Copyright Infringement for the General Practitioner

1.25 hours MCLE credit/no ethics credit.

Crimes in Foreign Lands

1.25 hours MCLE credit/no ethics credit.

Entertainment Law-Intellectual Property Protection

1.0 hour MCLE credit/no ethics credit.

Ethics Issues Updates: E-Discovery, Trial Prep, Advertising, Grievances, Lying & Negotiations

4.5 hours MCLE credit/ 4.5 hours ethics credit.

Fighting Fires in Pin Stripes or Pajamas: Common Criminal Law Emergencies

1.25 hours MCLE credit/no ethics credit.

Financial Meltdown of 2008-2009: Implications for Legal Claims and Defenses

1.25 hours MCLE credit/no ethics credit.

Firing Without Fear

1.5 hours MCLE credit/no ethics credit.

Forensic Mental Health Issues: A Primer

1.25 hours MCLE credit/no ethics credit.

Gun Laws in Texas: An Update on What You (and Your Clients) Need to Know

1.25 hours MCLE credit/no ethics credit.

How to Effectively Mediate When a Protective Order Has Been Ordered

1.25 hours MCLE credit/no ethics credit.

Hurricane Ike Legal & FEMA Training for Disaster Relief

2.0 hours MCLE credit/no ethics credit.

Income Tax for the Solo/Small Firm Attorney

1.5 hours MCLE credit/no ethics credit.

Is It Time to Kill the Death Penalty?: A View from the Bench and Bar

1.25 hours MCLE credit/no ethics credit.

Law Practice Management: Building and Enhancing Client Relationships

1.5 hours MCLE credit/no ethics credit.

Margin Tax: What Every Lawyer Needs to Know About the New Texas Franchise Tax

1.5 hours MCLE credit/no ethics credit.

Mastering the Art of Subrogation

1.0 hour MCLE credit/no ethics credit.

Mediation - From the Mediator and the Litigant

1.5 hours MCLE credit/no ethics credit.

Nuts and Bolts of Texas Criminal Law

1.25 hours MCLE credit/no ethics credit.

Off to Slake Their Thirst: The Texas Dram Shop Act

1.0 hour MCLE credit/no ethics credit.

Offer of Settlement Under Texas Rule 167 - A Double Edged Sword

1.25 hours MCLE credit/no ethics credit.

Persuasive Communication for Lawyers - Both Inside and Outside the Courtroom

1.25 hours MCLE credit/no ethics credit.

Practicing Law in the IV-D Courts

1.25 hours MCLE credit/no ethics credit.

Summary Judgments: Views From the Trial and Appellate Bench

1.5 hours MCLE credit/no ethics credit.

Take It or Leave It: Enforceability of 'No Contest' Clauses in Texas

1.25 hours MCLE credit/no ethics credit.

Taking an Equity Position in a Client: Business as Usual?

1.25 hours MCLE credit/ 1.25 hours ethics credit.

Tax Return Preparer's Penalties: What Gen- eral Practitioners Need to Know and Why

1.25 hours MCLE credit/no ethics credit.

Ten Rules for Great Jury Selection

1.0 hour MCLE credit/no ethics credit.

Texas Attorney Grievance Procedures

1.5 hours MCLE credit/1.50 hours ethics credit.

Texas Legislative Update - 2009

1.0 hour MCLE credit/no ethics credit.

The City of Houston as Plaintiff: Legislation You Never Knew Existed

1.25 hours MCLE credit/no ethics credit.

Trade Secret Protection in the Digital Age and Texas Non-Compete Update

1.25 hours MCLE credit/no ethics credit.

U.S. Immigration Law: Qualifying Through Employment & Family

1.25 hours MCLE credit/no ethics credit.

What Corporations and Executives Need to Know About White Collar Criminal Investigations

1.25 hours MCLE credit/no ethics credit.

What to Do When ICE Comes Calling on Your Client

1.25 hours MCLE credit/no ethics credit.

Wills & Probate Institute 2009 Advanced Topics

3.5 hours MCLE credit/no ethics credit.

Wills & Probate Institute 2009 Fundamentals

3.5 hours MCLE credit/no ethics credit.

Your Payroll: Wage & Hour Issues

1.25 hours MCLE credit/no ethics credit.